

# Cell Propulsion

Connected Electric Mobility Technologies

# Who we are?

- **Advanced Electro-Mobility Technology Company developing Electric Commercial Vehicles.**
- **Completely indigenous e-Powertrains & Software Technology for HEVs & LEVs.**
- **Proprietary IP with Vertical Integration Expertise enabling better Product Performance and Competitive Pricing.**
- **Fully Managed Mobility Solutions for fast growing Logistics & Transportation market.**
- **Only Indian Company developing 800V Integrated powertrains and mobility solutions for full-scale Deployment & Operations.**

# Vision

*To accelerate & lead transition to fully electric mobility.*

# Mission

*To lead the transition of commercial vehicles to electric by offering fully managed mobility solutions.*

# The Core Team



**Nakul Kukar**  
Co-founder & CEO

7 Years Experience With Rocket Engine & Electric Aircraft Design & Development



**Paras Kaushal**  
Co-founder & COO

6 Years Experience With Rocket Engine Ignition Systems, Spacecraft Thermal & Energy Storage Systems



**Supratim Naskar**  
CTO

7 years experience with Launch Vehicle Structures, Spacecraft Mechanisms & Space Robotics

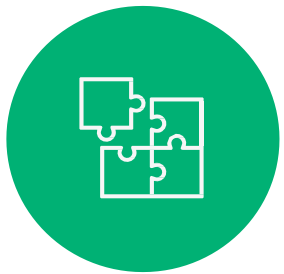
# Our USP



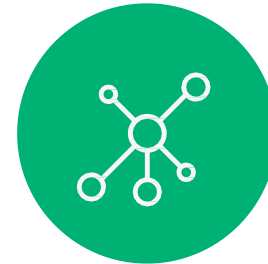
Exclusive focus on CV market & solving its pain points.



Extensive domain knowledge and vertical integration enables pricing control to achieve positive unit economics.

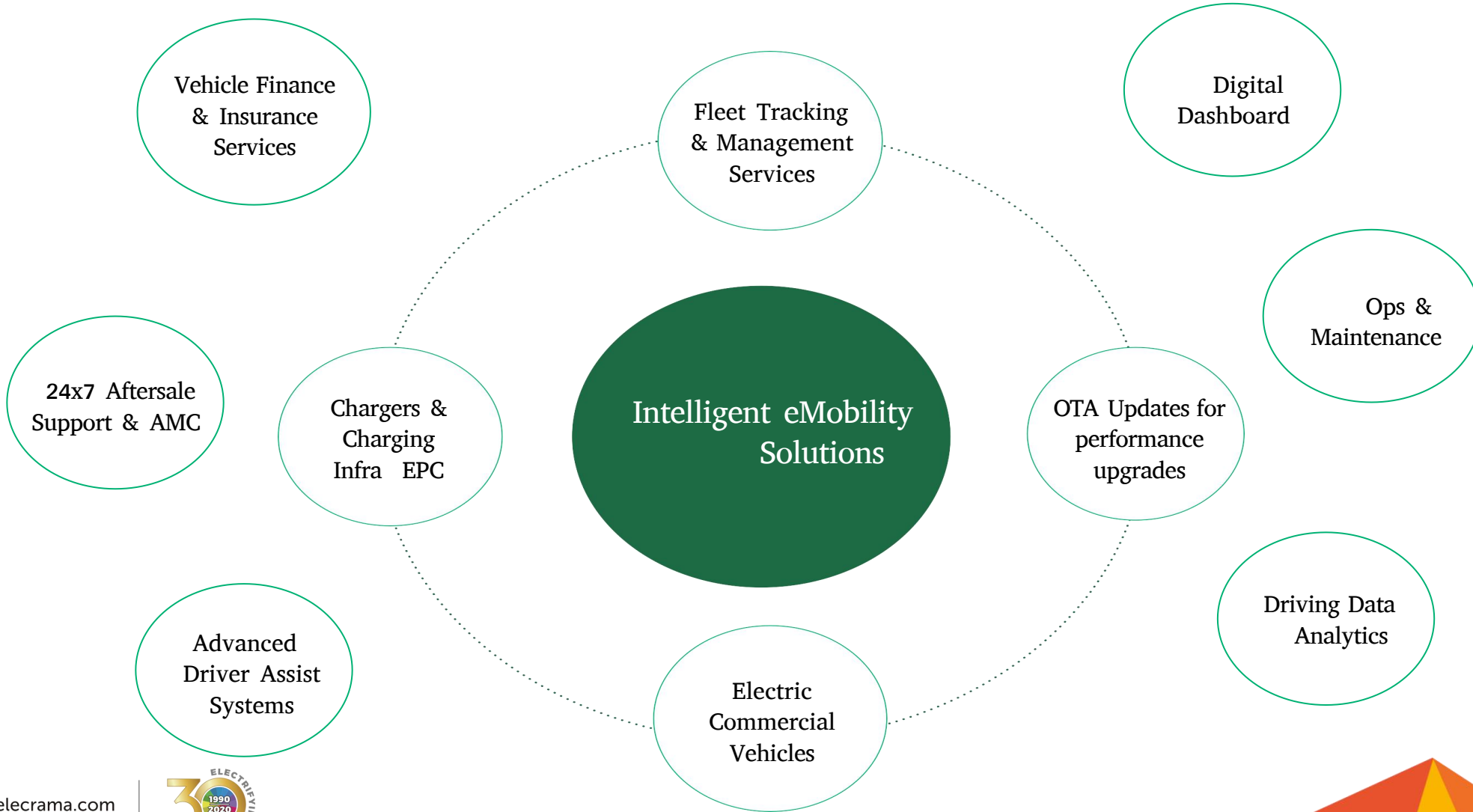


Proprietary Technologies for easy adaptability to dynamic market requirements.



Fully managed, complete product life-cycle support for best UX with new EV products

# Our Solution



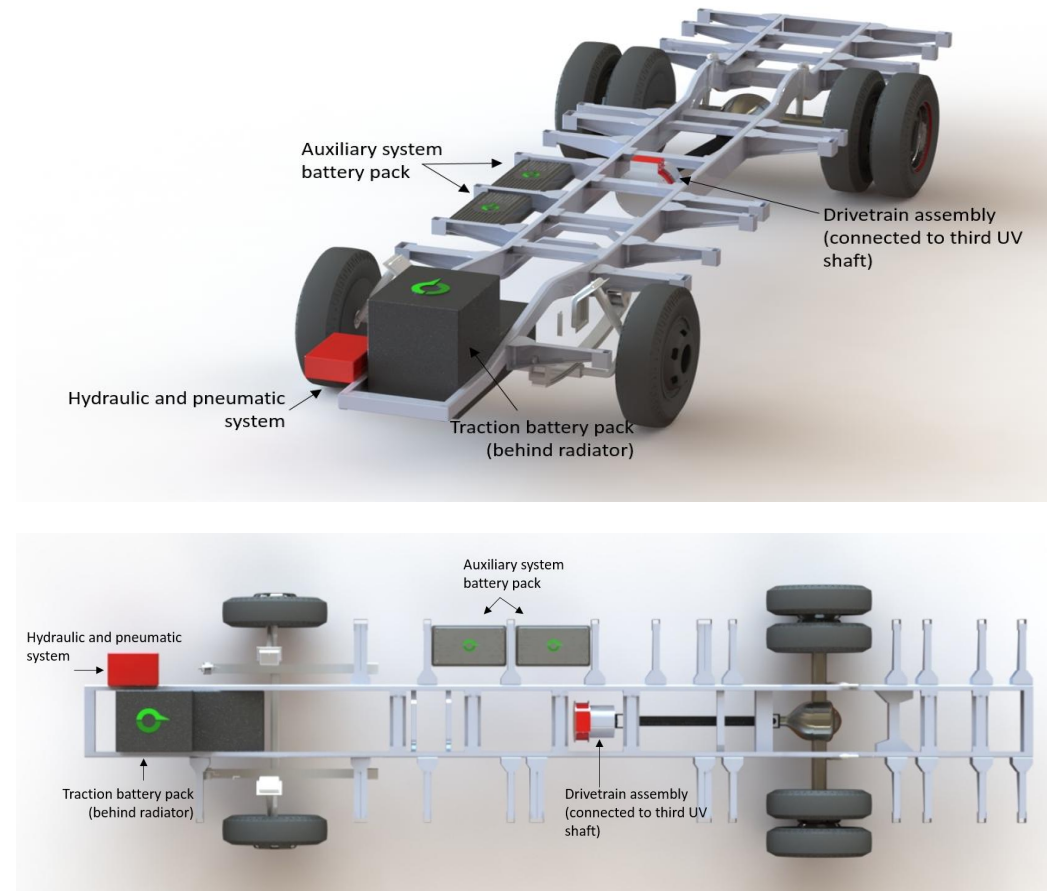
# Our Products

## Integrated e-Powertrains for eBuses & eTrucks

The powertrains consist of:

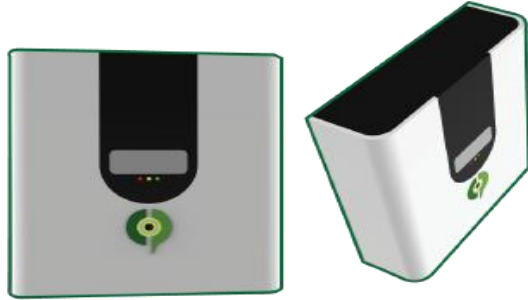
- **Hardware:** Electric motors, motor drives circuit board, battery packs, BMS circuit board, Charger Circuit board, Connectivity Module.
- **Software:** Motor Controller firmware, BMS Firmware, Charger firmware, Connectivity software stack, and Operating software layer.

The operating software integrates all the individual components into an intelligent system called powertrain which drives the vehicles and delivers required performance.





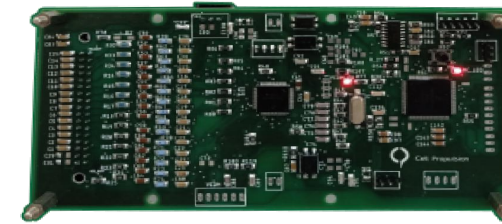
# Our Products



Slot-AC Battery Charger



Battery Pack



Battery Management System (BMS)



Traction Motor



Motor Controller

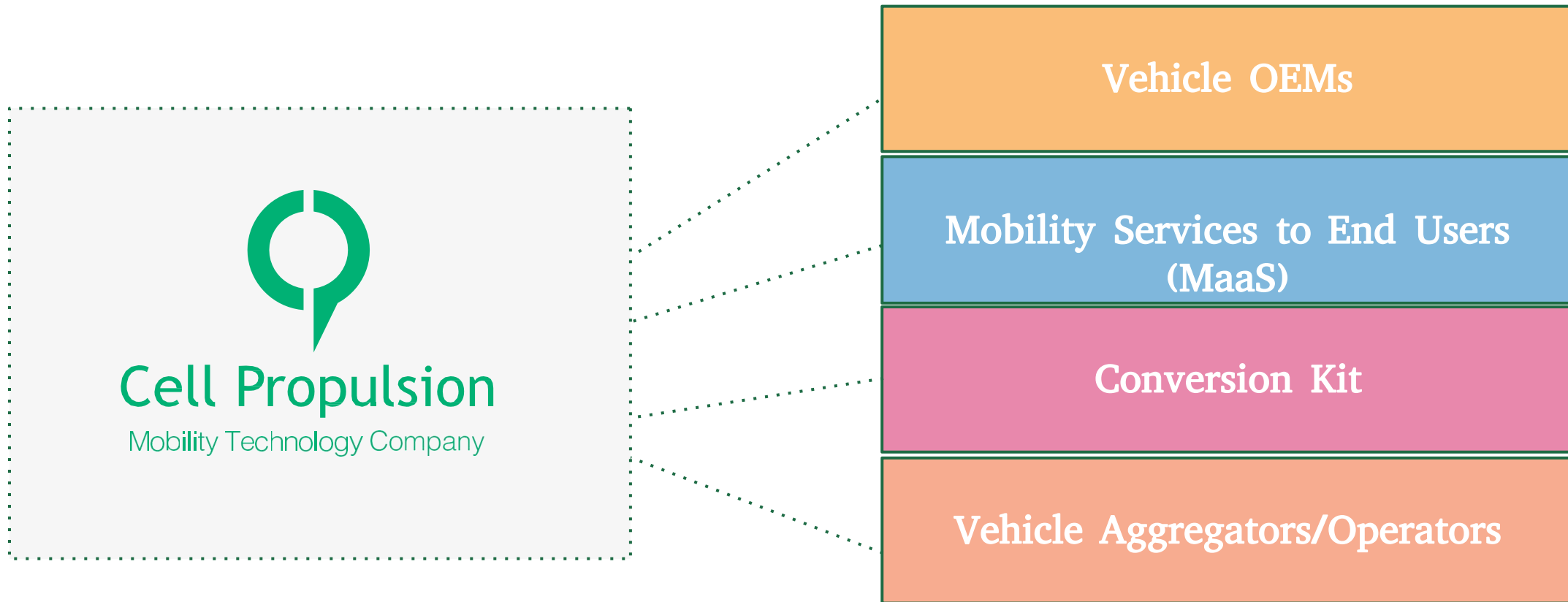


Vehicle Telematics Module

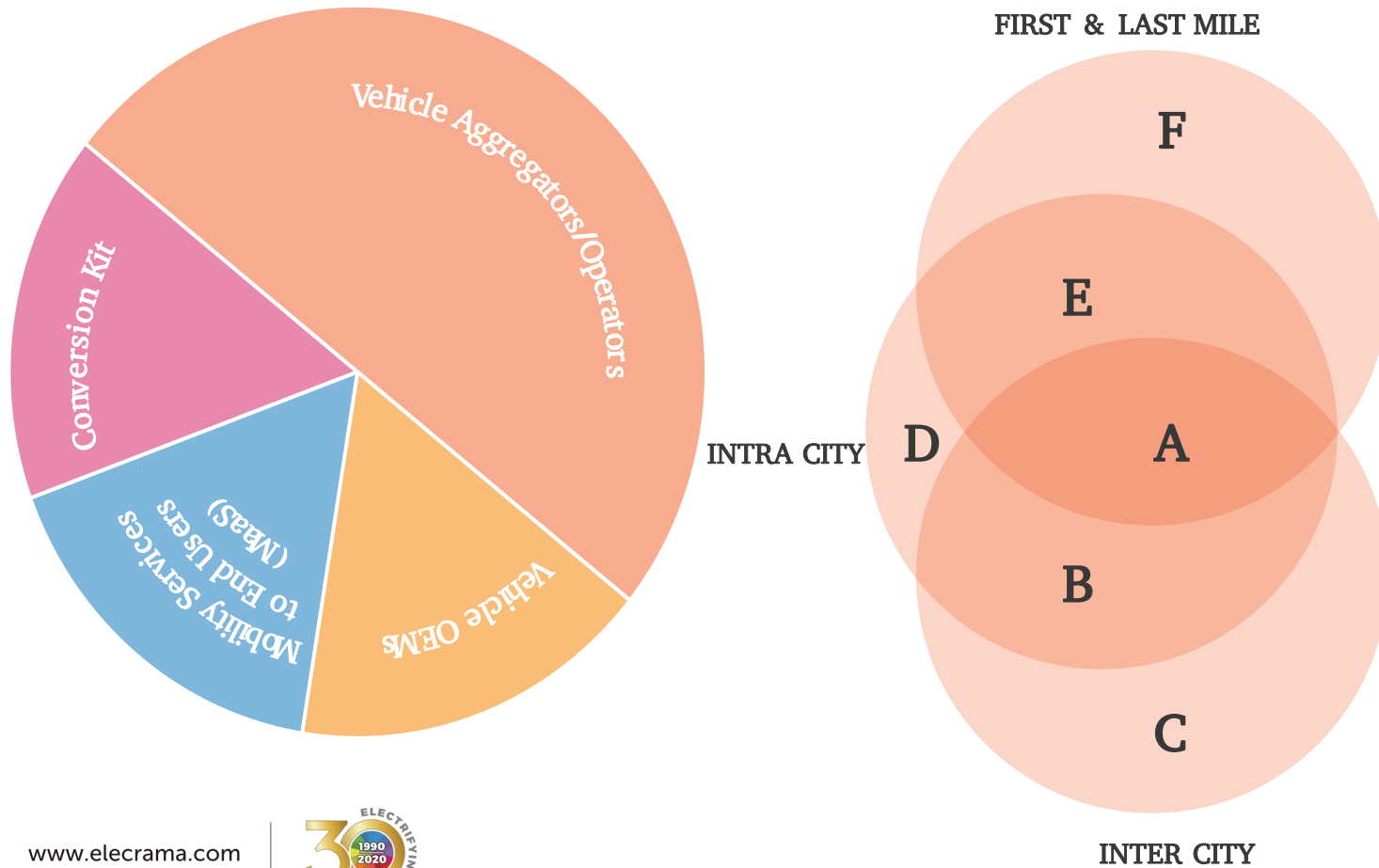


# Business Model

*Cell Propulsion engages with all players in the Mobility Value Chain*



# Market Segments



- A Gati, DTDC, FedEx, DHL, etc
- B Private Bus Operators SRS, VRL, Rivigo, etc.
- C Heavy Trucks Owners, Blackbuck, Delhivery
- D STUs, Shuttle, School Buses, Employee Transport
- E Porter, Udaan, E-commerce, BigBasket, Snowman Logistics cold chain, FMCG etc.
- F Swiggy, Zomato, Dunzo etc. (Primarily 2W & 3W segment)

**Business Model**

- Rental/EMI Model
- Fully managed Solutions

# Thank You!